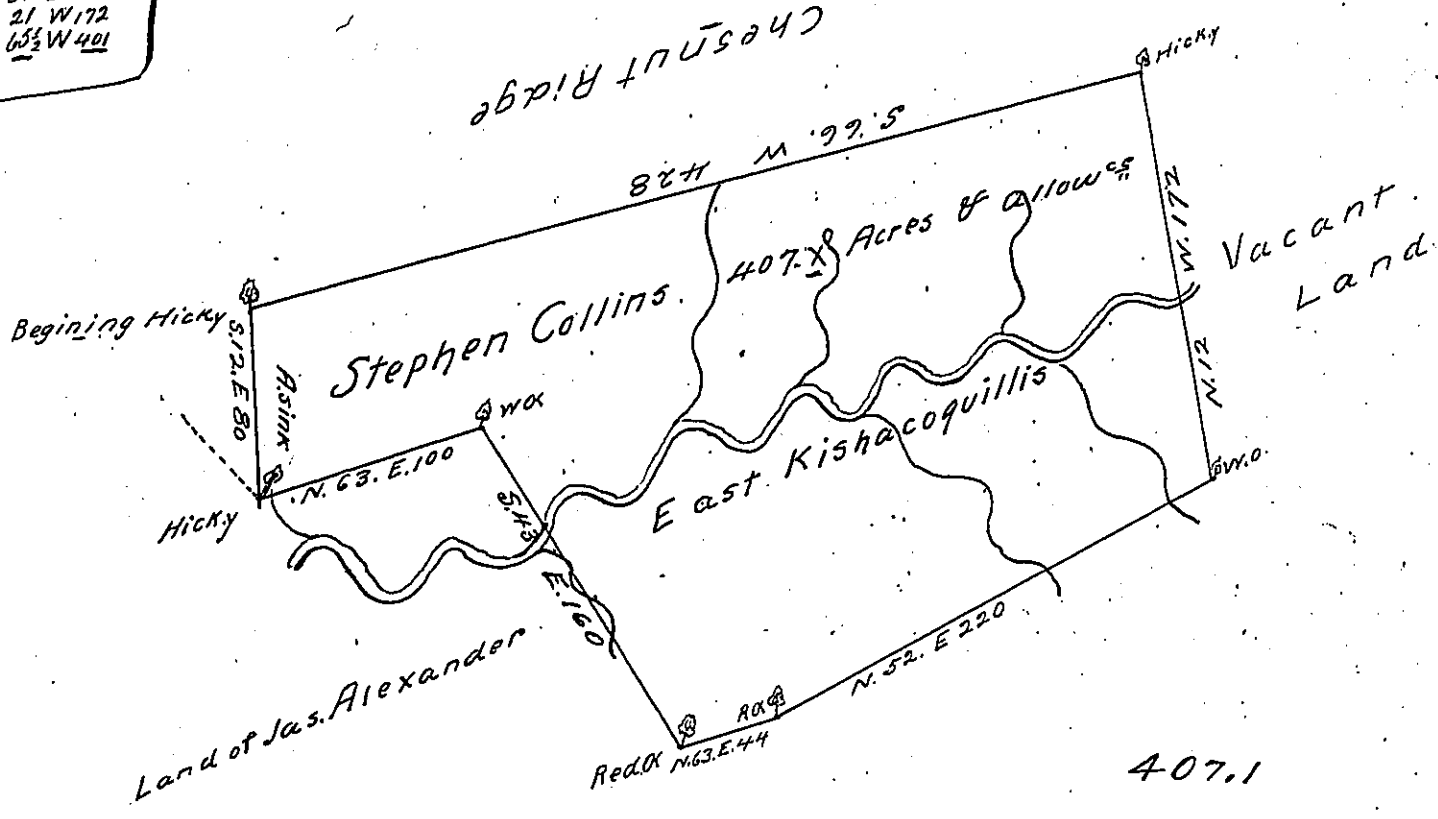


Courses & Distances

- S 12 E 80
- N 63 E 100
- S 43 E 160
- N 63 E 44
- N 52 E 220
- N 21 W 172
- S 63 1/2 W 401



407.1

Acres & Allowance

The Draught of a tract of land Situate in the East  
 end of Kishacoquillis Valley, <sup>Cumb. Co</sup> Containing four hundred  
 & seven acres & one tenth & the Usual allowance  
 of Six per Cent for Roads &c. Surveyed for Stephen  
 Collins Decr. the 15<sup>th</sup> 1784 In pursuance of a Warrant  
 from his Excellency the President of the Supreme  
 executive Council Dated at Philadelphia Sept. 2<sup>d</sup>  
 1784

John Lukens Esqr.  
 Surveyor General

Jas Harris D.S.

IN TESTIMONY that the above is a copy of the original remaining on file in  
 the Department of Internal Affairs of Pennsylvania, made  
 conformably to an Act of Assembly approved the 16th day of  
 February, 1833, I have hereunto set my Hand and caused  
 the Seal of said Department to be affixed at Harrisburg,  
 this seventh day of March 1904

*James P. Brown*  
 Secretary of Internal Affairs.